



NEWSLETTER



Established 1962

10 June 2014

Principal's Message

Welcome to Week 7 of Term 2. I hope everyone enjoyed a happy long weekend. Term 2 has been very busy and productive for our students and staff. I would like to thank Ms Levis for doing an outstanding job as Principal (Relieving) during my leave earlier this term.

Student Reports

Teachers have been very busy writing student reports. These will be sent home with all students on Wednesday 25th June. We are currently implementing the new Australian Curriculum and the format of our reports has changed as a result. The new format is more 'indicator' and 'content descriptor' based. This allows teachers the ability to indicate if students are below, at or above their stage level. There are comment boxes for English and Mathematics as well as a general comment box. We are hoping that this format will provide more relevant information for parents about how their child is achieving at school. Please do not hesitate to make an appointment with your child's class teacher if you have any questions or concerns about the content of the report or any issues regarding the education or wellbeing of your child.

Partial and Whole Day Absences

Please ensure that your child arrives at school before the 9am bell every day. At Marayong South we have many, many students who are regularly late for school. These children lose valuable learning time and miss important instructions and information.

It is a legal requirement that all children attend school every day. The exceptions are: illness, injury or infectious disease.

As the cold weather hits, so do the winter bugs. It's often hard to know whether to send your child to school or let them stay home to recover, especially when that means an adult cancelling work. For safety's sake, if your child seems unwell you should always keep them home from school and seek medical advice.

School A to Z and the NSW Health have created an at-a-glance chart to help answer your questions about common childhood illness and how long sick kids need to miss school. Find it by typing this link into your web browser www.bit.ly/1hytn2E

Payments for School Events

This term and next term we have many extra curricula events requiring payment such as camps, excursions, photos, Leadership Camp and swim school. Unfortunately the timing of these events cannot always be controlled by us as much depends on availability of places and venues etc. If any parent finds this difficult in terms of financial expectations, please come to the school office immediately as we can always assist with the arrangement of delayed or deferred payments which would ease the stress of having lots of money due all around the same time. We have always done this in the past and will continue to assist in this way.

If families are experiencing financial difficulties, we are able offer some financial assistance for day excursions. Applications for assistance can be made through an interview with the Principal. Appointments can be booked through the school office.

Why do we have limited places for camps?

When looking at the cost of running a school camp, the most expensive component is always transport. One bus will seat approximately 60 students. Two buses will seat up to 120, however, booking 2 buses will raise the cost of the camp so significantly that it becomes unaffordable for many families and places are then not filled. This results in the overall cost of the camp not being covered by the payments that are made by those who are prepared to pay the additional cost. Once buses and venues are booked, we must proceed with the camp whether the cost is covered or not as we have made a financial commitment on behalf of the school. This is not usually a problem as we often having trouble filling even one bus. However, there have been occasions when students may miss out. Unfortunately this is unavoidable. We sincerely apologise for any disappointment that may occur in the event that all student places are filled.

Mental maths strategies

We teach children a range of different strategies to add and subtract numbers. By showing them several methods for solving maths questions, we're helping them to look for patterns. All this builds a good sense of "number" which means they understand the relationships between different numbers and why different ways to add and subtract work well. The goal is that your child will understand many ways to approach a maths problem and will be able to choose a way that makes the most sense to them. School A to Z has a lot of resources, including help sheets on mental maths strategies, here : www.bit.ly/JkiUsY

Enjoy the rest of Term 2, everyone.

Warm regards,

Mrs Mandy Hollis

Principal

SRC DISCO

Tuesday 24 June 2014

**Kindergarten, Year 1 & 2 4.30 to
5.30pm**

Years 3 - 6 5.45 to 7.00pm

**\$4.00 per child or
\$7.00 family pass**

The cost includes one drink and snack
per person.

There will be an opportunity to
purchase glow-sticks at the door.

Tickets will be available to purchase
from Monday 16th June. Tickets will be
sold only in the morning before lines
under the cola from the SRC.

LL STUDENTS must be collected from
the hall **promptly** at the end of each
disco.

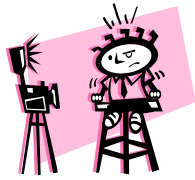
Reforms to P&C Federation

The NSW Parliament has introduced legislation to reform the NSW Federation of Parent and Citizens Associations, which has suspended operation pending Supreme Court action. While these reforms will not affect the day-to-day operation of individual school P&Cs, they will introduce a new executive structure which will ensure the Federation operates as a modern and representative body on behalf of school P&C Associations. Each school's

P&C Association will be asked to vote for councillors and delegates who will represent their electorate at the Federation's Annual General Meeting and councillors who will serve on the Federation's Board of Management. More information will be available on the Department's website at <http://www.schools.nsw.edu.au/gotoschool/az/involvement.php>.

PHOTO DAY

NEXT TUESDAY 17 JUNE



Envelopes may be returned to the admin office with the **CORRECT** money anytime before photo day. Online ordering is available, please see order form for details.

All students will have a photo taken on the day.

Family photo envelopes are available at the administration office and must be requested. There are three packs available for purchase at \$20, \$25 & \$30 each plus a gift pack for \$15. Siblings will be called for family photos after class photos.

Special photos such as School Captains, House captains, SRC and Library Monitors will also be taken on the day. Students please remember to wear your badges. Order forms will be available for purchase at a later date and will be able to be viewed in the admin foyer.

Photos commence at 9am. Students must be in FULL SCHOOL UNIFORM.

Students must be at school before roll call.

Please note that no change will be available from the administration office.

NOTICE OF SCHOOL SWIMMING SCHEME FOR YEARS 2-5 STUDENTS

Notes will be sent home Wednesday,

18 June. Swim School Instruction



will take place at Emerton Leisure Centre, Popondetta Road Emerton. This year the Swimming Scheme is being conducted during Term 3. It runs for 10 days from **Monday 25 August to Friday 5 September 2014 (Term 3 Weeks 7&8)**. This program is offered to students in **Years 2-5 who are non-swimmers or weak swimmers**. Students will leave by bus at 10.30pm and return by 1.00pm each day.

The total cost for the 10 day scheme is \$75.00, which includes transport by bus and pool entry.

We ask that a deposit of \$10.00 is paid with the permission note.

We will have 60 places available, so please return your deposit and permission note as soon as possible when you get the note. A payment booklet similar to the camp payment booklets will be issued on receipt of a deposit. Parents may pay the balance in instalments at any time prior to the payment due date of Wednesday 20 August 2014.

ENROL NOW FOR KINDERGARTEN 2015

If you know of any friends or neighbours that have a child turning 5

before the 31 July 2015 please ask at the administration office for an enrolment form.



Letters for Smart Start will be mailed during the last week of June to enrolled children. Smart Start will commence Term 3 Week 7 Thursday 28 August.

This program aims to help your child become familiar with the school environment and routines, and to develop their pre-skills in literacy and numeracy.

What is Smart Start - This program will run each Thursday from **9.15am to 10.45am**, beginning **28 August**. The program will run for a total of 12 weeks (28 November), during the school term. Parents are welcome to stay in the room until their child is settled. Your child will be joining in on the following activities as they participate in the Smart Start program:

- Developmental play,
- PALs Social Skill Program,
- Crunch and Sip,
- Shared reading experiences and,
- Pre-writing skills/fine motor activities.

The PALs social skill program teaches children about greeting others, listening, sharing, taking turns, dealing with feelings and solving problems.

SNAIL TRAIL

Congratulations to

5/6N and 1/2D on winning the class ice cream parties for having the longest snail trails.

We raised \$1081.00 towards Year 6 Farewell.



Thank You

BE SAFE

BE RESPECTFUL

BE A LEARNER